

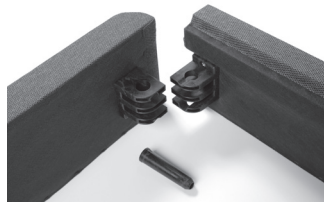
EAGAN

Ready-to-Assemble Foundation

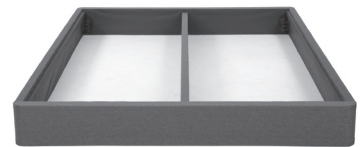
Eagan Ready-to-Assemble Foundation

The Eagan foundation embodies support and style with its functional design. The foundation uses corner hinge brackets and deck slats sewn into fabric for an easy-to-assemble process.

- The foundation can be used on a bed frame or alone on the floor to support a mattress.
- Interlock-Corner Block System fastens together in an instant.
- Fabric-encased deck slats for consistent support.
- Parcel carrier-friendly.
- ASTM-certified testing including rollator, Cornell, and impact prove its durability.



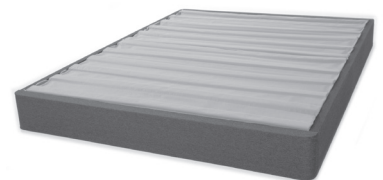
Quick-connecting Interlock-Corner Block System



Full and Queen sizes feature one center support. King and Cal King feature two center supports



Sturdy fabric-encased roll-out slats



Assembled foundation is 7.5" tall

Weights and Carton Dimensions

	Twin	Twin XL	Full	Full XL	Queen	King	Cal King
Weight	43 lbs.	46 lbs.	64 lbs.	N/A	69 lbs.	77 lbs.	80 lbs.
Dimensions	10" x 11" x 77"	10" x 11" x 77"	9" x 17" x 77"	N/A	9" x 17" x 77"	15" x 11" x 76"	10" x 18" x 80"

Leggett & Platt

BeddingComponents.com